



## JSC "Shahrisabz konserva"

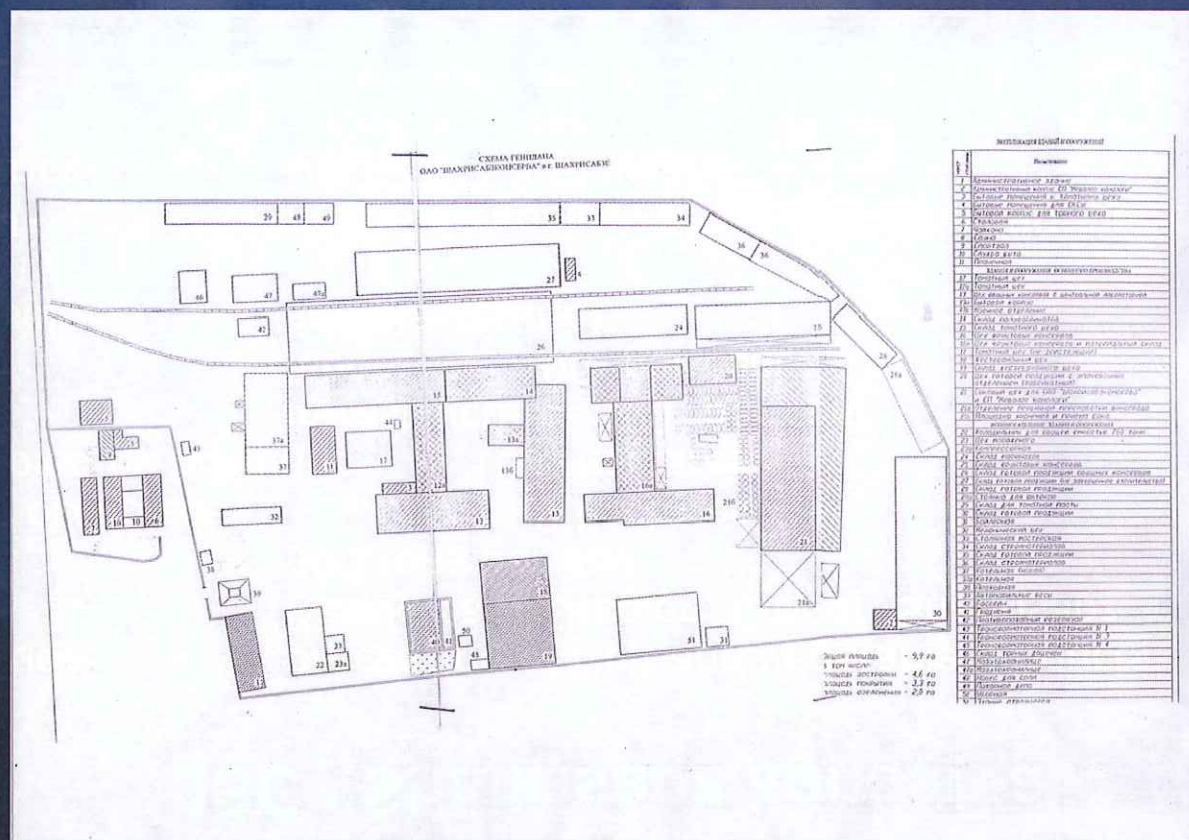
[9]

- Specialization- processing of fruit and vegetable products
- Location- Kashkadarya Region, City of Shahrisabz
- Capacity- 400 tons per day
- Total area occupied- 14,9 hectares.
- Area occupied by buildings- 10,8 hectares.
- Facilities- infrastructure- 100 per cent  
labor - 100 per cent
- Terms of sale- complex (suite)
- Equipment- made in Yugoslavia, deterioration- 90 per cent
- Starting price- USD 2102,0 thousand



# JSC "Shahrisabz konserva"

[10]







## JSC "Shahrisabz konserva"

[11]





# JSC "Shahrisabz konserva"

[12]

